

APPLICATION SPOTLIGHT

Firetrace Protects Cable Trays From Fire



Image 1 - Elevated Cable Trays

Elevated cable trays crisscross above the floors of thousands of factories and manufacturing facilities around the world (*see Image 1*). Some may carry electrical lines while others carry voice or data line. These cable trays pose an interesting situation when it comes to fire protection: How do you protect open cable trays that are anywhere from 10 to 40 feet above the ground? Firetrace now provides an excellent, cost-effective solution to this application.

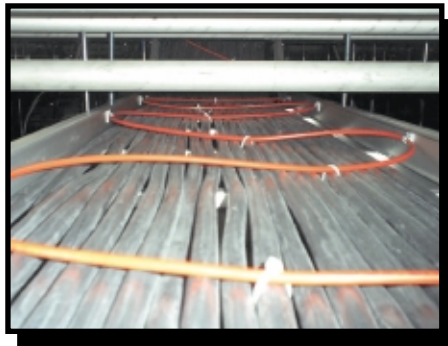


Image 2 - Firetrace Detection Tubing run over electrical cables

Recently, a Firetrace International distributor installed 141 Firetrace Direct Low Pressure (DLP) systems in one production facility of a worldwide supplier of consumer electronics. With its tubing flexibility, the DLP systems were able to have their Firetrace Detection Tubing serpentine over the cable trays (*see Image 2 & 3*). The systems had specially designed Tubing runs that incorporated both "T" and "X" Tubing Connectors. These connectors allowed each individual DLP system to cover up to a 150-foot section of the cable trays. Over 20,000 feet of Firetrace Detection Tubing were used throughout the electronics plant. The Firetrace systems were comprised of both six and 12 pound cylinders containing FM-200®. Firetrace Pressure Gauges were strategically mounted on easily visible outer sections of the trays for routine inspection (*see Image 4*).

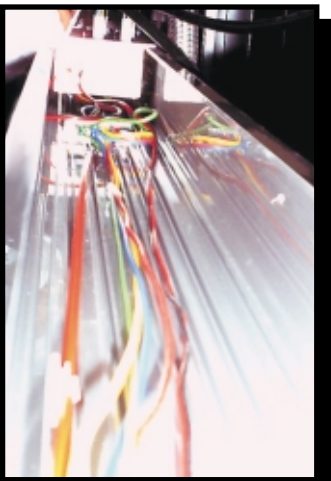


Image 3 - Firetrace Detection Tubing run over process control wires

The electronics manufacturer was very pleased with the project costs, installation time and system configuration. They anticipate adding this same Firetrace protection to three of their other facilities.



Image 4 - Firetrace Pressure Gauges



Image 5 - Firetrace DLP System.

FIRETRACE®
AUTOMATIC FIRE SUPPRESSION SYSTEMS